



GUAM POWER AUTHORITY

ATURIDÁT ILEKTRESEDÁT GUÅHAN
P.O.BOX 2977 • HAGÁTÑA, GUAM U.S.A. 96932-2977

FOR IMMEDIATE RELEASE

April 13, 2026

For More Information Contact:

Joyce N. Sayama

Communications Manager

Phone No. (671) 648-3145

Damaging Winds Possible Impact on GPA's Island-Wide Power System

(Fadian, Mangilao) – Over the past week, GPA crews have been addressing power outages, fluctuations, and vegetation management around the northern, central, and southern sectors of the island. Once GPA Management determines that conditions are no longer safe for repairs or tree trimming, crews will secure and stand down for their safety as the high winds make it unsafe to continue repairs or trim trees around the island.

Repairs of the system will resume once high winds die down to a safe level, GPA will mobilize our teams to proceed with assessments and repairs. This will begin the recovery phase of the island-wide power system around Guam.

Please be advised that power outages and fluctuations are expected during damaging wind conditions. **GPA does not intend to shut down the island-wide power system (IWPS).** The system runs automatically, and only shuts down power service to residents and businesses when damage has occurred to any of the power circuits. For safety reasons, the system will shut down automatically.

The system continues to be energized as long as power circuits remain intact. GPA's goal is to keep part of the system running throughout the storm because it will allow for faster post-storm recovery.

As damaging winds approach Guam, power outages will occur throughout the island. If power circuits go offline, GPA will work on energizing it immediately. If power doesn't return in a few minutes, it is most likely that the circuit is damaged and GPA will have to wait until the storm passes before it can make repairs. **The GPA team is prepared to immediately begin restoration as soon as winds decrease to safe levels.**

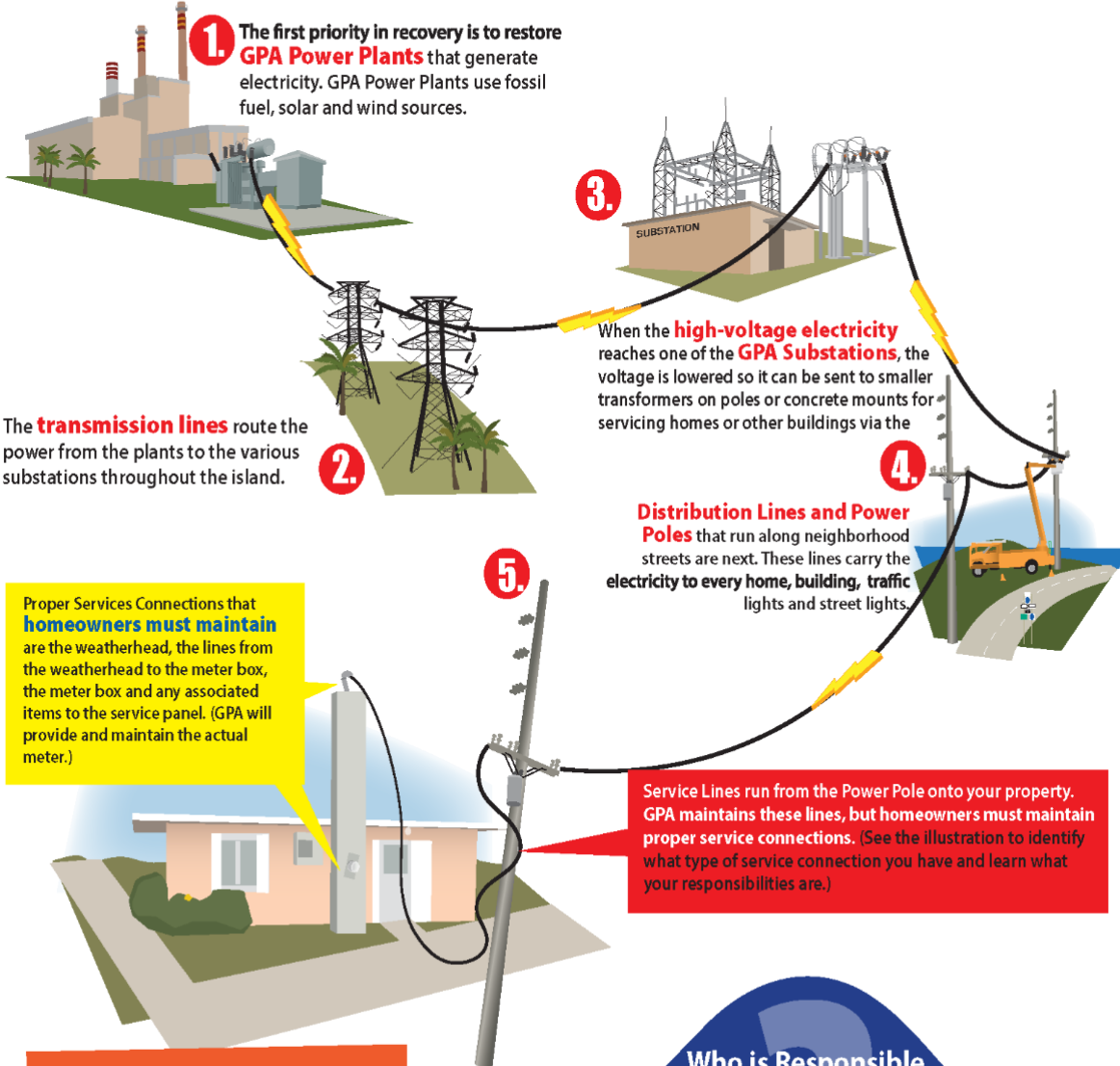
GPA wants everyone to stay safe and secure, and ask for your patience and understanding as we get through the storm together.

###

HOW POWER IS RESTORED AFTER TROPICAL STORMS AND TYPHOONS

How GPA Restores Power to Your Home

To restore service as quickly as possible, GPA must repair all components in the prioritized order shown below.



Remember,
HIGH VOLTAGE KILLS
 Downed or dangling power lines can cause electrocution

After the storm passes, look around and be alert for fallen or downed power lines. Consider ALL fallen lines to be "live" to avoid severe injury or death.

Electricity travels through standing water and can cause electrocution

Avoid flooded areas even if they are shallow. Don't step into water in case a downed power line is touching it. Remember, the power line may be some distance away or even out of sight.



Want to learn more?
www.guampowerauthority.com

Who is Responsible for Fixing What?

If your electrical components are damaged, you may be responsible for repairs. Identify your type of service connection below to learn more.

CUSTOMER'S RESPONSIBILITY

GPA'S RESPONSIBILITY

