



GUAM POWER AUTHORITY

ATURIDÁT ILEKTRESEDÁT GUÅHAN
P.O.BOX 2977 • HAGÁTÑA, GUAM U.S.A. 96932-2977

FOR IMMEDIATE RELEASE

April 13, 2026

**For More Information Contact:
Joyce N. Sayama
Communications Manager
Phone No. (671) 648-3145**

ADVISORY TO THE PUBLIC

GPA Crews Continue Repairs Throughout the Island as Conditions Allow

(Fadian, Mangilao) - This evening, Guam Power Authority (GPA) line crews continue to actively address power related issues and restore service throughout the island in northern, central and southern sectors until it is determined that conditions are no longer safe for repairs.

Power outages and fluctuations occurred as the weather began to deteriorate earlier today. Restoration efforts are being conducted as conditions allow throughout the evening.

Customers may continue to see crews working in various villages as power is restored. GPA appreciates the community's patience and understanding as crews work to safely restore power.

Customers are encouraged to follow Guam Power Authority, Guam Homeland Security/Office of Civil Defense, and National Weather Service Guam on social media for the latest updates.

###

Facebook: <https://www.facebook.com/GuamPowerAuthority>

Instagram: <https://instagram.com/guampowerauthority>

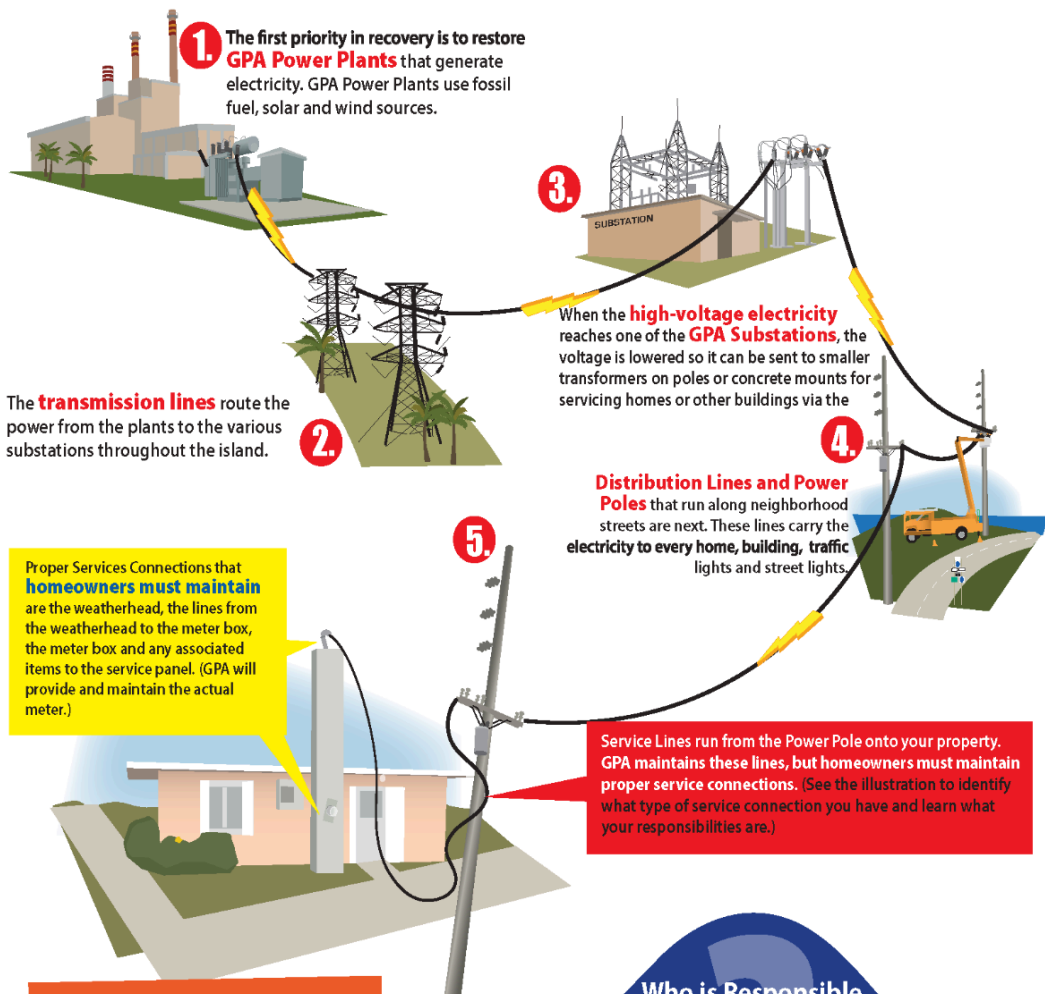
For the latest NWS or GHS/OCD advisory information, visit:

- NWS Website: <https://www.weather.gov/gum/>
- NWS Facebook: <https://www.facebook.com/NWSGuam/>
- GHS/OCD Website: <https://ghs.guam.gov/>
- GHS/OCD Facebook: <https://www.facebook.com/GHSOCD/>

HOW POWER IS RESTORED AFTER TROPICAL STORMS AND TYPHOONS

How GPA Restores Power to Your Home

To restore service as quickly as possible, GPA must repair all components in the prioritized order shown below.



Remember,
HIGH VOLTAGE KILLS
 Downed or dangling power lines can cause electrocution

After the storm passes, look around and be alert for fallen or downed power lines. Consider ALL fallen lines to be "live" to avoid severe injury or death.

Electricity travels through standing water and can cause electrocution

Avoid flooded areas even if they are shallow.
 Don't step into water in case a downed power line is touching it. Remember, the power line may be some distance away or even out of sight.

Who is Responsible for Fixing What?

If your electrical components are damaged, you may be responsible for repairs. Identify your type of service connection below to learn more.

CUSTOMER'S RESPONSIBILITY	GPA'S RESPONSIBILITY

Want to learn more?
www.guampowerauthority.com