



GUAM POWER AUTHORITY

ATURIDÁT ILEKTRESEDÁT GUÅHAN
P.O.BOX 2977 • HAGÁTÑA, GUAM U.S.A. 96932-2977

FOR IMMEDIATE RELEASE

April 14, 2026

**For More Information Contact:
Joyce N. Sayama
Communications Manager
Phone No. (671) 648-3145**

ADVISORY TO THE PUBLIC

GPA Crews Secured From Aerial Work Until Conditions Improve

(Fadian, Mangilao) - Guam Power Authority (GPA) crews have secured from aerial (bucket truck lift) work due to dangerous wind and strong gusts from Typhoon Sinlaku. However, crews continue to work on the ground as needed for other repairs so long as it is safe to do so.

Power outages and fluctuations are expected during typhoon condition. Safety remains the top priority and the crews are prepared to immediately begin key assessments and restoration efforts as soon as winds decrease to safe levels.

We ask the community for their patience and understanding as we get through the storm together. Please continue to pray for the safety of our crews.

Customers are encouraged to follow Guam Power Authority, Guam Homeland Security/Office of Civil Defense, and National Weather Service Guam on social media for the latest updates.

###

Facebook: <https://www.facebook.com/GuamPowerAuthority>

Instagram: <https://instagram.com/guampowerauthority>

For the latest NWS or GHS/OCD advisory information, visit:

NWS Website: <https://www.weather.gov/gum/> -

NWS Facebook: <https://www.facebook.com/NWSGuam/> -

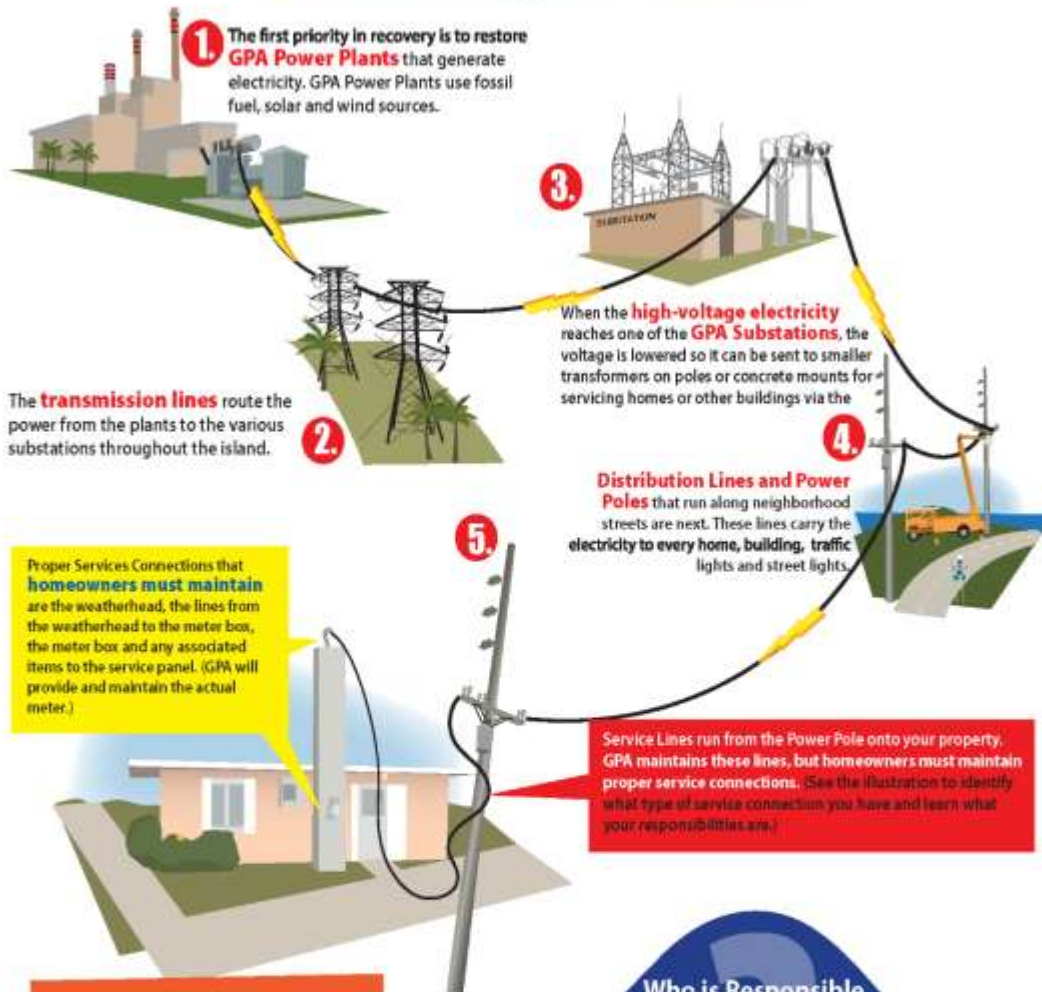
GHS/OCD Website: <https://ghs.guam.gov/> -

GHS/OCD Facebook: <https://www.facebook.com/GHSOCD/>

HOW POWER IS RESTORED AFTER TROPICAL STORMS AND TYPHOONS

How GPA Restores Power to Your Home

To restore service as quickly as possible, GPA must repair all components in the prioritized order shown below.

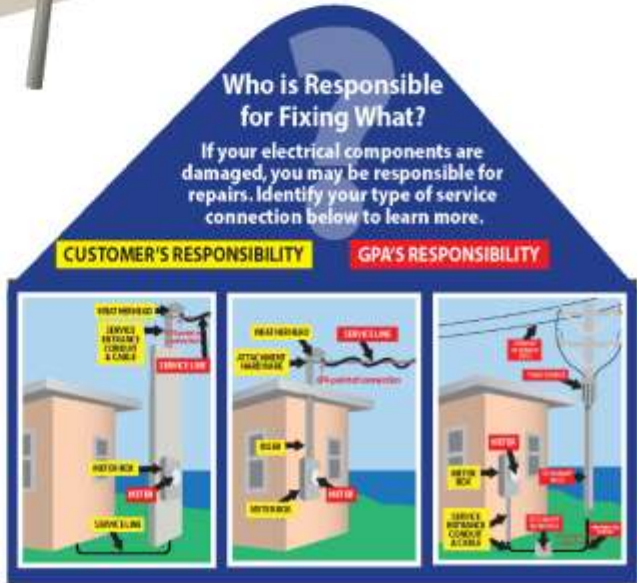


Remember,
HIGH VOLTAGE KILLS
Downed or dangling power lines can cause electrocution

After the storm passes, look around and be alert for fallen or downed power lines. Consider ALL fallen lines to be "live" to avoid severe injury or death.

Electricity travels through standing water and can cause electrocution

Avoid flooded areas even if they are shallow. Don't step into water to cross a downed power line if touching it. Remember, the power line may be some distance away or even out of sight.



Want to learn more?
www.guampowerauthority.com