



GUAM POWER AUTHORITY

ATURIDÂT ILEKTRESEDÂT GUÅHAN
P.O.BOX 2977 • HAGÂTNÂ, GUAM U.S.A. 96932-2977

FOR IMMEDIATE RELEASE

January 8, 2026

**FOR MORE INFORMATION
CONTACT: JOYCE SAYAMA
PHONE NO.: 671 648-3145**

ADVISORY TO THE PUBLIC

GPA to Perform Vegetation Trimming along Route 4 - Partial Lane Closure

(Fadian, Mangilao) – The Guam Power Authority (GPA) advises the public that crews will be conducting vegetation trimming in and around the villages of **Sinajana and Chalan Pago-Ordot** on **Saturday, January 10, 2026**, from **8:00 a.m. to 2:00 p.m.**

Crews will be working along Route 4 from **the Ada's Mortuary in Sinajana to the intersection of Route 4 and Route 10 in Chalan Pago-Ordot**. While conducting vegetation trimming, the outer southbound lane may be temporarily closed at various locations along this route, however traffic will continue to flow through the area using the remaining open lanes.

Motorists may experience brief traffic delays while traveling through this area and are advised to use caution and adhere to traffic control signs and flagger instructions.

Vegetation trimming is part of GPA's year-round preventative maintenance as Guam's tropical climate and frequent rainfall accelerates vegetation growth near power lines in certain areas.

As a safety reminder for customers, only GPA crews or GPA's authorized contractors should trim trees near power lines. Always stay away from downed lines or equipment, as they may still be energized and pose a serious danger.

If you need assistance with tree trimming near power lines or notice trees or objects in contact with power lines, do not attempt to handle it yourself. Please report the issue immediately to:

- **GPA 24-Hour Trouble Dispatch:** (671) 475-1472/3/4
- **GPA Customer Services:** (671) 647-5787/88/89

Please provide the exact location or address, contact information and condition of location.

GPA appreciates the public's patience and cooperation as crews perform this necessary maintenance work.

To get the most up-to-date information, please visit our website at www.guampowerauthority.com or social pages:

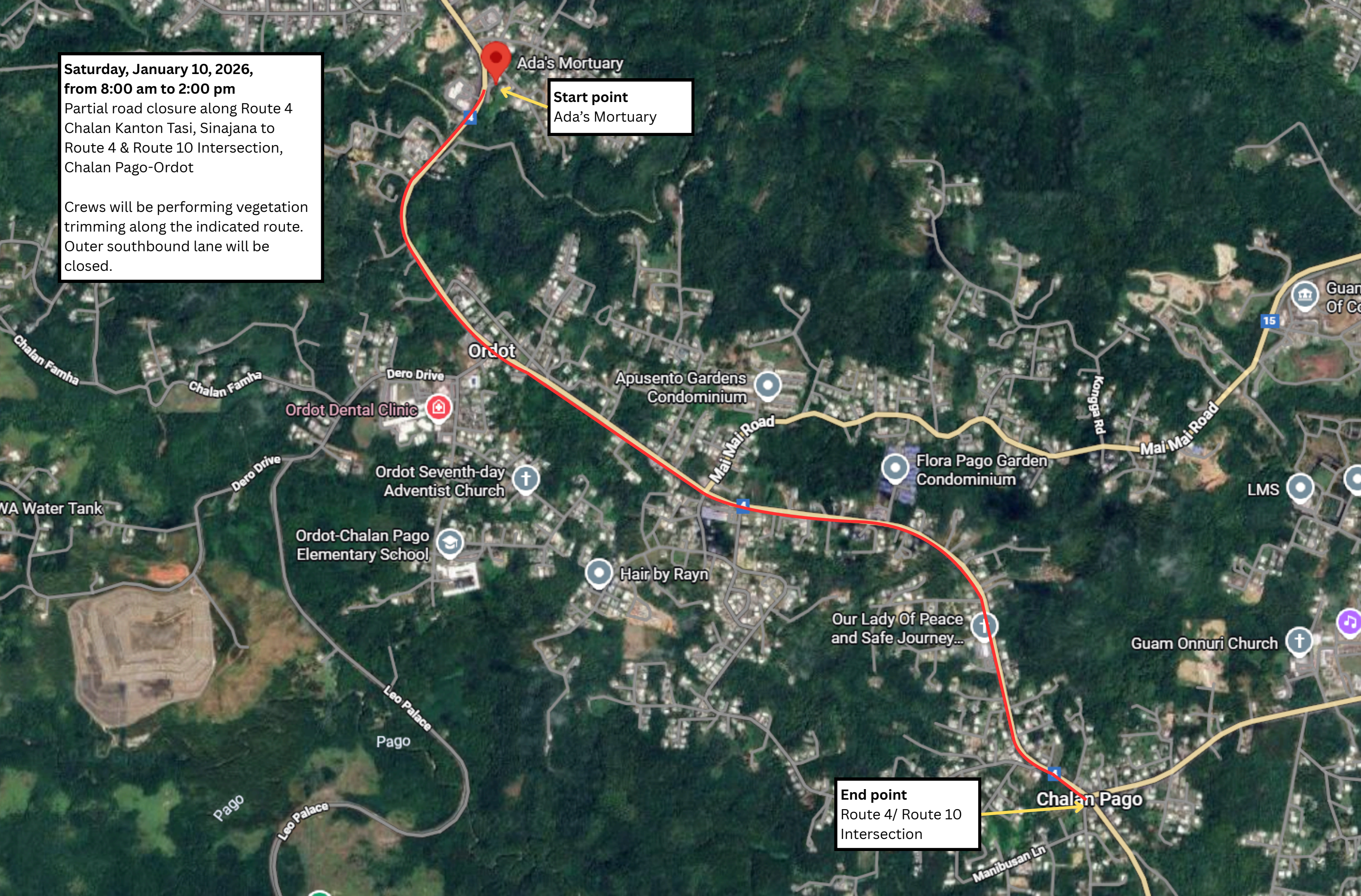
Facebook: <https://www.facebook.com/GuamPowerAuthority>

Instagram: <https://instagram.com/guampowerauthority>

###

**Saturday, January 10, 2026,
from 8:00 am to 2:00 pm**
Partial road closure along Route 4
Chalan Kanton Tasi, Sinajana to
Route 4 & Route 10 Intersection,
Chalan Pago-Ordot

Crews will be performing vegetation
trimming along the indicated route.
Outer southbound lane will be
closed.



Start point
Ada's Mortuary

End point
Route 4/ Route 10
Intersection