



# GUAM POWER AUTHORITY

ATURIDÁT ILEKTRESEDÁT GUÅHAN  
P.O.BOX 2977 • HAGÁTÑA, GUAM U.S.A. 96932-2977

FOR IMMEDIATE RELEASE

April 13, 2026

FOR MORE INFORMATION, CONTACT:

JOYCE N. SAYAMA  
COMMUNICATIONS MANAGER  
PHONE NO.: (671) 648-3145

## GPA Continues Preparation Measures in Anticipation of Typhoon Sinlaku

(Fadian, Mangilao) – As Typhoon Sinlaku is moving northwest towards the Marianas, the Guam Power Authority (GPA) continues to prepare the island-wide power system for the potential impacts of tropical storm-force winds. As part of our ongoing storm preparedness protocols, GPA crews are continuing to work to safeguard power plants and substations, ensuring they are fortified against tropical storm conditions.

These preparations include:

- **Vegetation Management:** Although vegetation clearing is conducted year-round, GPA's Transmission and Distribution (T&D) teams are giving special attention to areas known for overgrowth, including excessive trees and bamboo, which can pose risks during storms.
- **Emergency Staffing:** GPA has ensured that appropriate staffing levels are in place to respond to any emergencies, as long as weather conditions permit safe operations.
- **Generator Readiness:** GPA teams are checking and fueling standby generators, including those for water wells, to ensure they are operational and ready to provide backup power if needed.
- **Adequate Inventory:** GPA has worked toward increased inventory to ensure that critical materials and supplies are readily available when needed.

We urge all customers to continue to take precautions and safely clear any debris or vegetation around their homes and businesses that could become hazardous during the storm. **Outdoor items such as large signage, lawn furniture, canopies, and garbage cans can become projectiles in high winds. Secure all lightweight objects and anchor any items that may become airborne and damage GPA power lines and equipment.** Please look around your property, and remove damaged trees and overhanging branches to keep you, your property, and power lines safe.

GPA reminds residents to take precautions and protect or unplug sensitive electronic equipment to prevent damage due to lightning strikes or power surges. Customers are also advised that if you are experiencing power fluctuations, brownouts, extremely bright lights, dimming/flickering lights, or water coming out of your outlets, turn off your main breaker as you may cause damage to other appliances.

**As power restoration progresses and communications systems are restored, Guam Power Authority's Automated Meter Infrastructure, or Smart Meter Network, and Supervisory Control and Data Acquisition (SCADA) systems will provide detailed information on outage locations. These systems allow GPA to confirm where power has been restored, identify customers still without service, and locate smaller outage pockets within villages.**

**Because GPA can monitor restoration and identify remaining outages through these systems, residents are asked not to inundate or overwhelm GPA Trouble Dispatch lines with inquiries regarding service restoration.**

Trouble Dispatchers will receive calls for down energized (sparking) lines, damaged poles or blown transformers. **Please stay away from all down lines and equipment as they may still be energized and can cause harm if you come in contact with the lines or equipment. Consider such situations as dangerous and life threatening. If such conditions are present, please immediately report this situation to GPA's 24-Hour Trouble Dispatch at 475-1472/3/4 or via direct message on GPA's Facebook or Instagram page.** Please provide the exact location or address, contact information and condition of location.

Stay informed and prepared by listening to updates from the National Weather Service (NWS) and Guam Homeland Security/Office of Civil Defense.

Stay Safe, Guam.

Please visit [www.guampowerauthority.com](http://www.guampowerauthority.com) and GPA's social media pages for more information and more storm preparedness tips.

Facebook: <https://www.facebook.com/GuamPowerAuthority>

Instagram: <https://instagram.com/guampowerauthority>

"How to Build an Emergency Supply Kit" <https://www.facebook.com/reel/3746536755624250>

"Storm Preparedness Plan" <https://www.facebook.com/reel/894272975934011>

For the latest NWS or GHS/OCD advisory information, visit:

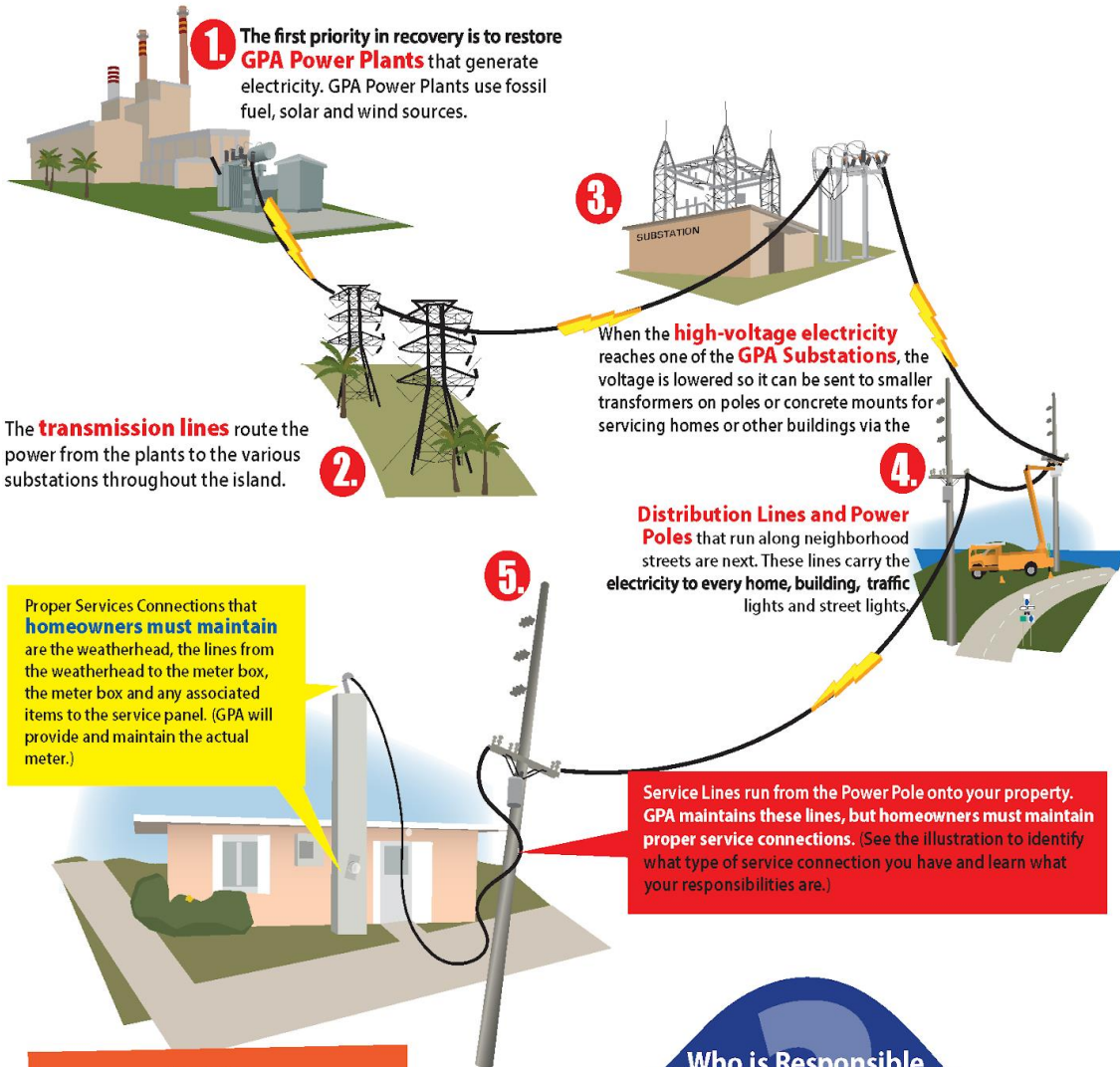
- NWS Website: <https://www.weather.gov/gum/>
- NWS Facebook: <https://www.facebook.com/NWSGuam/>
- GHS/OCD Website: <https://ghs.guam.gov/>
- GHS/OCD Facebook: <https://www.facebook.com/GHSOCD/>

###

# HOW POWER IS RESTORED AFTER TROPICAL STORMS AND TYPHOONS

## How GPA Restores Power to Your Home

To restore service as quickly as possible, GPA must repair all components in the prioritized order shown below.



Remember,  
**HIGH VOLTAGE KILLS**  
 Downed or dangling power lines can cause electrocution

After the storm passes, look around and be alert for fallen or downed power lines. Consider ALL fallen lines to be "live" to avoid severe injury or death.

**Electricity travels through standing water and can cause electrocution**

Avoid flooded areas even if they are shallow. Don't step into water in case a downed power line is touching it. Remember, the power line may be some distance away or even out of sight.



Want to learn more?  
[www.guampowerauthority.com](http://www.guampowerauthority.com)

### Who is Responsible for Fixing What?

If your electrical components are damaged, you may be responsible for repairs. Identify your type of service connection below to learn more.

#### CUSTOMER'S RESPONSIBILITY

#### GPA'S RESPONSIBILITY

